

Is there a compulsory test for my stay?

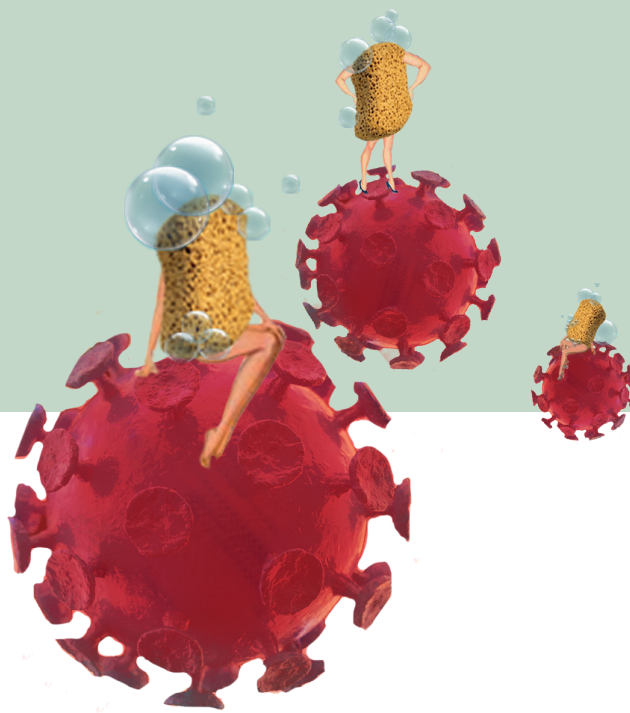
Yes, a negative corona test (PCR or antigen) is a prerequisite for a stay in our house, which must be repeated every 72 hours. The test results are to be presented at the reception without being asked. A complete Corona vaccination (14 days after receiving the second vaccination) or a recovery from Corona (at least 28 days and a maximum of 6 months) exempts from the test obligation, as long as the proof is available/presented upon arrival. We would like to point out that the mask obligation still applies in the house.

WE ACCEPT THE FOLLOWING TESTS:

A confirmation of a negative antigen rapid test or PCR test not older than 48 hours.

Hamburg has several testing centers in our immediate area. An overview of the test centers in Hamburg can be found at <https://www.hamburg.de/corona-schnelltest/>.

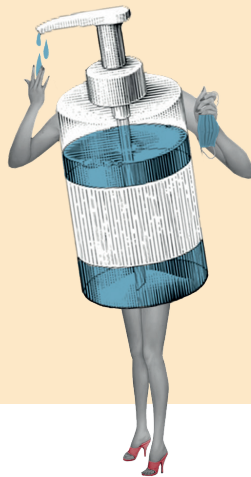
Please note that we can only accept a rapid antigen test that has been performed by an official test center.



How We Keep Keep Hotels Clean

AND YOU SAFE

IWe care about your well-being. Even though there is still some some uncertainties, at Pyjama Park we do everything we can to keep you healthy and safe. Below you will find all the relevant information about how we keep the hotels clean and safe. If you have any unanswered questions, please feel free to contact us directly at any time. We look forward to hearing from you!



OUR HYGIENE CONCEPT

Access restriction and distance regulationWe pay attention to a limited number of people present at the receptions. In addition, distance zones have been have been marked and guests as well as employees are requested to keep the minimum distance of 2 meters

MASK DUTY

All our employees wear mouth-nose protection and we ask our guests to wear masks as well.

HANDHYGIENE

Disinfection dispensers are available at all entrances, the elevator and in the reception area.

CONTACTLESS PAYMENT

Please use the possibility to pay on site with credit card or EC- card.

GUEST CONTACT

Keeping your distance, hand disinfection and the use of masks are the most important measures to ensure the safety of our guests and staff to ensure the safety of our guests and employees. In the areas in front of the reception desk or the in the areas in front of the reception desk or in the elevators, distance markings have been installed, and additional protective glass panels have been set up at the reception desk.

DESINFEKTION IN DEN ÖFFENTLICHEN BEREICHEN

Keeping your distance, hand disinfection and the use of masks are the most important measures to ensure the safety of our guests and staff to ensure the safety of our guests and employees. In the areas in front of the reception desk or the in the areas in front of the reception desk or in the elevators, distance markings have been installed, and additional protective glass panels have been set up at the reception desk.

PERFECT CLEANLINESS AND HYGIENE IN THE ROOM

In the rooms, the already strict cleaning guidelines were supplemented once again. The cleaning staff wear mouth and nose protection, change gloves and cleaning cloths after each room, and clean and disinfect all rooms.